



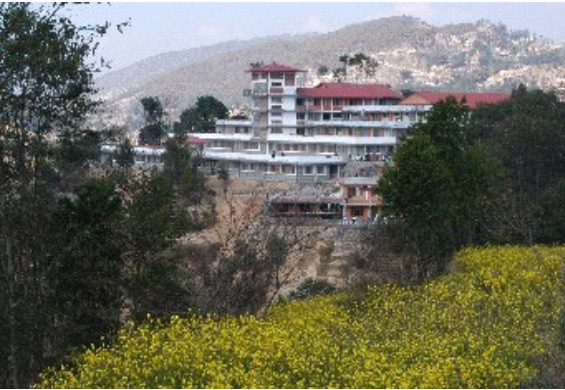
Dhulikhel Hospital

Annual Report 2002-2003



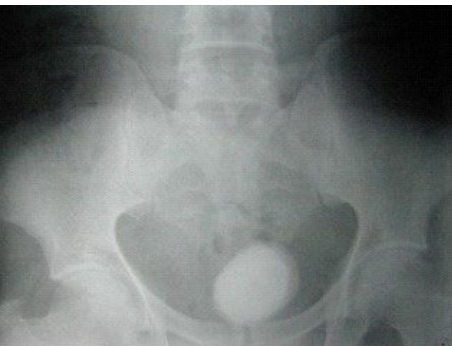
Introduction

Dhulikhel Hospital is an independent, not for profit, non-government, institution which was conceived and supported by the Dhulikhel Community, as a quality health services provider. The hospital was formally opened in 1996, as a collaborative project of the Municipality of Dhulikhel, NepaliMed Vorarlberg, Austria and the Dhulikhel Health Service Association to ensure accessibility of Primary health care services to the community. Several individuals from the community as well as foreign residents and visitors also supported the project through donations of land, money and services.



The Hospital covers the population of approximately 1.2 million people from Kavrepalanchowk, Sindhupalchowk, Dolakha, Sindhuli and Ramechhap Districts. The Hospital received the highest social services "Tulsimehar Award" in recognition of its excellent work in the social sector by the Government of Nepal. Dhulikhel Hospital is guided by the principle of social equity, sustainable development and harmony with nature. Through its trained staff, it provides cost effective, compassionate and quality health care services.

Dhulikhel Hospital is guided by the principle of social equity, sustainable development and harmony with nature. Through its trained staff, it provides cost effective, compassionate and quality health care services.



Hospital Services

The Hospital services are organized as follows:

Ambulance Services

Diagnostic Services

- a. Laboratory
- b. Radiology
- c. Electrocardiography
- d. Ultrasonography
- e. Cystoscopy
- f. Bronchoscopy
- g. Endoscopy

Therapeutic Services

- a. Pharmacy
- b. Outpatients Clinics
- c. Mother and Child Health Services
- d. Dental Services
- e. Emergency and Trauma Services
- f. In Patient Services
- g. Operating Theatre Services
- h. Emergency Obstetric and Labor Services

These services are available on all working days including 24 hours emergency services.





Village Outreach Primary Health Care Programs are delivered through our own clinics in:

- a. Baluwa, Kavre
- b. Chhatreaurali, Dhading
- c. Bolde Phediche, Kavre
- d. Bahunpati, Sindhupalchok
- e. Dapcha-Kakre, Kavre

Outreach Primary Health Care Services include:

- a. Mobile Blood Donation Programs
- b. Mobile Rural Health Clinics
- c. Promotive and Preventive Health Services in partnership with local non-government Organizations
- d. Non-formal Education in Health for Community Services Providers.
- e. Basic curative services including surgeries



Exchange Students Clinical Placement Programs with:

- a. Vienna University, Austria: Medical Students
- b. University College of the Cariboo, Canada: Nursing Students
- c. Saskatchewan Institute of Applied Science and Technology, Canada: Nursing Students
- d. Kwantlen University College, Canada: Nursing Students
- e. Langara College, Canada: Nursing Students
- f. Nepal Schools: Medical, Nursing and Paramedical Students - On the Job Training

Manpower

Dhulikhel Hospital believes that collaboration between health care professionals is essential throughout the process of care. There are 146 full time employees including 27 doctors, 64 nurses, 39 paramedics and 151 other staffs providing services in different Departments. Also, Volunteers from different countries provide services in Pediatrics, Physiotherapy, Surgery and Anesthesia

Training and development

The hospital also recognizes the importance of having qualified and competent Paramedical and Nursing manpower to serve the long-term health needs of Nepal. Dhulikhel Medical Institute was created in 1998 through a partnership between Dhulikhel Hospital and Kathmandu University, and Til Ganga Eye Care Centre with the assistance of DANIDA, Dhulikhel Municipality Quality Education Project. There are 253 students currently studying in Dhulikhel Medical Institute, in Nursing,

General Medicine, Clinical Health Laboratory, Ophthalmology and Physiotherapy. A Diploma in Health Sciences is granted by Kathmandu University after the successful completion of the three-year academic course. Thirty-five students have already graduated from DMI and are providing services in different parts of Nepal.

We are also involved in training of community women in basic health care and income generation activities. Altogether 245 of them were given basic and refresher training by the hospital.

Dhulikhel Hospital has as a top priority well-qualified and dedicated staff. The hospital has developed a human resources development plan. We have sent two doctors for higher studies who will be joining us on completion of their studies in a couple of month time. Similarly ten nurses have returned from overseas training in Canada and two are leaving for studies in Canada soon. In the near future, three more doctors and three nurses are planning to embark on further studies. One of our doctors has just finished her training in OBGYN and has returned to the hospital.



Constructions and Maintenance Works

Timely maintenance and repair work in the main Hospital building and in the annexes are being done by our engineering and maintenance department. A two story " Moni Pati" for patients and patients' relatives was built and is being used. A well-



equipped modern Laboratory building is constructed where 24 hour laboratory services will be provided. As well, the hospital has mobilized its resources to construct health care centers in Bolde Phediche and Baluwa in Kavre, Bahunpati in Sindhupalchok and Chhatredeurali in Dhading Districts. The repair and maintenance work in the wastewater treatment plant was also carried out last year.

As planned, construction work is completed to upgrade the present Hospital capacity to 160 beds.

Similarly, the Operation theatres have been upgraded to European standards making them germ free and air-conditioned.

Hospital Statistics

A glimpse at 2002-2003 Hospital Statistics are as follows:

Total Hospital Beds:	160
Occupancy Rate:	85%
Percentage of Free-Beds:	20%
Average Number of the Patients in OPD:	150/Day
Average Number of the Admitted Patients:	25/Day
Average Number of the Emergency Patients:	30/Day
Average surgery:	28/Day
Average OBGYN:	30/Day
Average Medicine:	40/Day
Average Pediatric:	25/Day
Average MCH/FP:	27/Day

Dhulikhel Hospital has provided the following services to the following numbers of patients through 2002-2003:

Total out patients	33716
Total inpatients	3220
Operations (Major & Minor)	4800
Major Operations	1385
Babies Delivered	768
Total Caesarian Section	73
Family Planning (Permanent sterilization)	62
Total ANC visits	869
Total FP Counseling	631
Total patients seen in the outreach clinics	10678

Finances

Dhulikhel Hospital is an independent, non-profit, community owned, HMG ministry of Health licensed health services provider. The motto of the hospital is to provide compassionate, quality and affordable services to those in need, mainly the poor and the underprivileged groups of Nepal. One can enter into the system seeing any doctor including specialists by paying Nrs 15 and a follow up fee of just Nrs 10. For those who cannot afford it, we provide them charity services. Last year 3300,000 rupees of charity services were given to 5600 poor patients.

The hospitals total operational income for 2002-2003 was 32,521,000.00 (approximately 33 million) rupees. It's total operational expenditure was 35,987,000.00 (approximately 36 million) rupees. The deficit was adjusted from funds received in cash or kind by our donors and from the interest earned on hospital seed money. The auditing of 2002-2003 fiscal year has been completed.

Future Plans

Dhulikhel Hospital project Agreement has been signed with the Social Welfare Council in 1999 after getting approved from the Ministry of Health, Women, Children and Social Welfare Ministry, Ministry of Home affairs and National Planning Commission. Extension of General Ward construction has completed which increased hospital bed capacity to take care of needy patients. Construction is underway, a new, well-equipped Dhulikhel Medical Institute which will help to increase student intake to 100 per year. Staff and student hostel at Vendol is under construction. We will substantially add to the physical infrastructure of the hospital in order to upgrade it as the University Teaching Hospital.

In the mean time, the community concept of the hospital will be expanded to rural areas by providing comprehensive community health care services through our own Primary Health Care Centre in Kavre, Sindhupalchok and Dhading.

I would like to thank all NepaliMeds, the Government of Nepal, Agencies, Land Donors, individuals and friends, foreign residents and visitors who support us with their open heart and trust in our endeavors. We will continue to work hard through our committed team to provide quality, compassionate and sustainable health services to the people of Nepal.

Thank you.

Submitted by: Dr. N. Sharma, Administrative Director Dhulikhel Hospital

January 02, 2004